



QUALITY IS OUR FIRST PRIORITY

COMMERCIAL CERTIFIED 150/40

32' TO 60' Wide - Up To 20' Height - Any Length

PRICE INCLUDES:

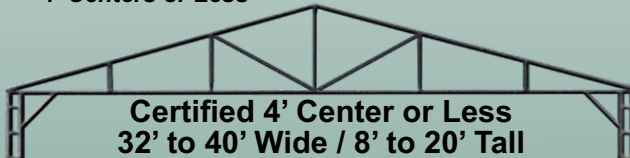
- Vertical Siding Panels
- 1 Year Workmanship Warranty (Limited)
- 20 Year Warranty (See Website For More Info)
- 29 Gauge Roofing
- Cement Anchors
- Mobile Home Anchors (Ground)
- Welded Trusses
- Braces On Every Leg
- 14 Gauge Framing
- 4' Centers or Less

PRICES FOR TOP ONLY

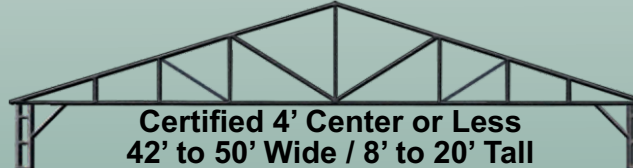


PRICE NOTE:

- Customer must provide **TELESCOPIC FORKLIFT** during installation and must be able to reach 10' beyond the building height.
- Site inspection is required before installation.
- Colored screws are available.
- 26 Gauge Metal Upgrade Available.
- Upgrade Available, 12G 150/50.



Certified 4' Center or Less 32' to 40' Wide / 8' to 20' Tall				
32 x 20 \$7,295	34 x 20 \$7,695	36 x 20 \$8,195	38 x 20 \$8,595	40 x 20 \$9,195
32 x 24 \$8,595	34 x 24 \$8,995	36 x 24 \$9,495	38 x 24 \$9,995	40 x 24 \$10,595
32 x 28 \$9,795	34 x 28 \$10,295	36 x 28 \$10,795	38 x 28 \$11,295	40 x 28 \$11,895
32 x 32 \$11,095	34 x 32 \$11,595	36 x 32 \$12,095	38 x 32 \$12,595	40 x 32 \$13,195
32 x 36 \$12,395	34 x 36 \$12,995	36 x 36 \$13,395	38 x 36 \$13,895	40 x 36 \$14,495
32 x 40 \$13,595	34 x 40 \$14,295	36 x 40 \$14,795	38 x 40 \$15,195	40 x 40 \$15,795
32 x 44 \$14,895	34 x 44 \$15,595	36 x 44 \$16,095	38 x 44 \$16,595	40 x 44 \$17,195
32 x 48 \$16,095	34 x 48 \$16,895	36 x 48 \$17,395	38 x 48 \$17,895	40 x 48 \$18,495
32 x 52 \$17,395	34 x 52 \$18,195	36 x 52 18,695	38 x 52 \$19,195	40 x 52 \$19,795

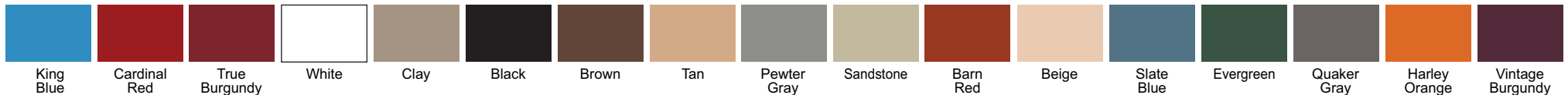


Certified 4' Center or Less 42' to 50' Wide / 8' to 20' Tall				
42 x 20 \$9,595	44 x 20 \$10,095	46 x 20 \$10,695	48 x 20 \$11,295	50 x 20 \$11,995
42 x 24 \$10,895	44 x 24 \$11,395	46 x 24 \$11,995	48 x 24 \$12,695	50 x 24 \$13,395
42 x 28 \$12,195	44 x 28 \$12,695	46 x 28 \$13,295	48 x 28 \$13,995	50 x 28 \$14,795
42 x 32 \$13,595	44 x 32 \$13,995	46 x 32 \$14,595	48 x 32 \$15,395	50 x 32 \$16,095
42 x 36 \$14,895	44 x 36 \$15,395	46 x 36 \$15,995	48 x 36 \$16,795	50 x 36 \$17,495
42 x 40 \$16,195	44 x 40 \$16,695	46 x 40 \$17,295	48 x 40 \$18,195	50 x 40 \$18,895
42 x 44 \$17,495	44 x 44 \$17,995	46 x 44 \$18,595	48 x 44 \$19,595	50 x 44 \$20,295
42 x 48 \$18,795	44 x 48 \$19,295	46 x 48 \$19,895	48 x 48 \$20,895	50 x 48 \$21,695
42 x 52 \$20,195	44 x 52 \$20,595	46 x 52 \$21,195	48 x 52 \$22,295	50 x 52 \$22,995

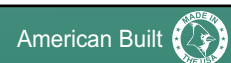


Certified 3'6" Center or Less 52' to 60' Wide / 8' to 20' Tall				
52 x 20 \$12,495	54 x 20 \$13,295	56 x 20 \$13,995	58 x 20 \$14,795	60 x 20 \$15,495
52 x 24 \$13,895	54 x 24 \$14,695	56 x 24 \$15,395	58 x 24 \$16,095	60 x 24 \$16,895
52 x 28 \$15,195	54 x 28 \$16,095	56 x 28 \$16,795	58 x 28 \$17,495	60 x 28 \$18,195
52 x 32 \$16,595	54 x 32 \$17,495	56 x 32 \$18,195	58 x 32 \$18,895	60 x 32 \$19,595
52 x 36 \$17,995	54 x 36 \$18,795	56 x 36 \$19,595	58 x 36 \$20,295	60 x 36 \$20,995
52 x 40 \$19,395	54 x 40 \$20,195	56 x 40 \$20,895	58 x 40 \$21,695	60 x 40 \$22,395
52 x 44 \$20,795	54 x 44 \$21,595	56 x 44 \$22,295	58 x 44 \$22,995	60 x 44 \$23,795
52 x 48 \$22,095	54 x 48 \$22,995	56 x 48 \$23,695	58 x 48 \$24,395	60 x 48 \$25,095
52 x 52 \$23,495	54 x 52 \$24,395	56 x 52 \$25,095	58 x 52 \$25,795	60 x 52 \$26,495

PLEASE NOTE THAT THE COLORS MAY VARY DUE TO THE PRINTING PROCESS.



www.carolinacarports.com



OPTIONS, ACCESSORIES AND EXTRAS

OPTIONS	20' LONG	24' LONG	28' LONG	32' LONG	36' LONG	40' LONG	44' LONG	48' LONG	52' LONG
12G 150/50	\$840	\$960	\$1,080	\$1,200	\$1,320	\$1,440	\$1,560	\$1,680	\$1,800
Connection Fee Per Lean-To	300	325	350	375	400	425	450	475	500

SIDE HEIGHT

HEIGHT	20' LONG	24' LONG	28' LONG	32' LONG	36' LONG	40' LONG	44' LONG	48' LONG	52' LONG
10' Tall	\$430	\$520	\$605	\$690	\$780	\$865	\$950	\$1,035	\$1,125
12' Tall	865	1,035	1,210	1,380	1,555	1,730	1,900	2,075	2,245
14' Tall	1,535	1,845	2,150	2,460	2,765	3,070	3,380	3,685	3,995
16' Tall	2,450	2,895	3,340	3,785	4,235	4,680	5,125	5,575	6,020
18' Tall	3,360	3,840	4,320	4,800	5,280	5,760	6,240	6,720	7,200
20' Tall	3,790	4,470	5,115	5,830	6,510	7,190	7,865	8,545	9,225

BOTH SIDES CLOSED

HEIGHT	20' LONG	24' LONG	28' LONG	32' LONG	36' LONG	40' LONG	44' LONG	48' LONG	52' LONG
8' Tall	\$1,030	\$1,235	\$1,440	\$1,645	\$1,850	\$2,050	\$2,255	\$2,460	\$2,665
10' Tall	1,175	1,405	1,630	1,870	2,100	2,350	2,580	2,810	3,035
12' Tall	1,320	1,585	1,850	2,110	2,375	2,640	2,905	3,170	3,430
14' Tall	1,465	1,755	2,050	2,340	2,635	2,930	3,220	3,515	3,805
16' Tall	2,040	2,450	2,855	3,265	3,670	4,080	4,490	4,895	5,305
18' Tall	2,470	2,970	3,460	3,955	4,450	4,945	5,440	5,935	6,425
20' Tall	2,905	3,485	4,065	4,645	5,225	5,810	6,390	6,970	7,550
TWO TONE (BOTH SIDES)	300	350	400	450	500	550	600	650	700

EACH END CLOSED

EACH END CLOSED	8' TALL	10' TALL	12' TALL	14' TALL	16' TALL	18' TALL	20' TALL	TWO TONE (PER END)
32' Wide	\$2,755	\$2,935	\$3,115	\$3,295	\$3,475	\$3,655	\$3,835	\$600
34' Wide	2,875	3,055	3,235	3,415	3,595	3,775	3,955	625
36' Wide	2,995	3,175	3,355	3,535	3,715	3,895	4,075	650
38' Wide	3,115	3,295	3,475	3,655	3,835	4,015	4,195	675
40' Wide	3,235	3,415	3,595	3,775	3,955	4,135	4,315	700
42' Wide	3,355	3,535	3,715	3,895	4,075	4,255	4,435	725
44' Wide	3,475	3,655	3,835	4,015	4,195	4,375	4,555	750
46' Wide	3,595	3,775	3,955	4,135	4,315	4,495	4,675	775
48' Wide	3,715	3,895	4,075	4,255	4,435	4,615	4,795	800
50' Wide	3,835	4,015	4,195	4,375	4,555	4,735	4,915	825
52' Wide	3,955	4,135	4,315	4,495	4,675	4,855	5,035	850
54' Wide	4,075	4,255	4,435	4,615	4,795	4,975	5,155	875
56' Wide	4,195	4,375	4,555	4,735	4,915	5,095	5,275	900
58' Wide	4,315	4,495	4,675	4,855	5,035	5,215	5,395	925
60' Wide	4,435	4,615	4,795	4,975	5,155	5,335	5,515	950

Uncertified	Certified
\$500	6' X 6' \$750
\$600	8' X 8' \$800
\$650	9' X 8' \$850
\$700	10' X 8' \$950
\$800	10' X 10' \$1050
\$1400	*12' X 12' \$1900
\$2100	*14' X 14' \$2500
\$2500	*16' X 16' \$2700

White Only

Uncertified	Certified
\$600	6' X 6' \$850
\$700	8' X 8' \$900
\$750	9' X 8' \$950
\$800	10' X 8' \$1050
\$900	10' X 10' \$1150
\$1500	*12' X 12' \$2000
\$2200	*14' X 14' Coming
\$2600	*16' X 16' Soon

P. Grey
 Green
 Brown
 Barn Red
 Beige

Building must be 2' taller than the garage door when installed on the side.
*Chain Hoist Included In Price

Chain Hoist
\$325.00 Each

Colored Screws
Add 3% of Retail Cost of Building

Frameouts
45° Angle \$85
(Plus Frameout Charge)
Garage Door \$150
Window \$75
Walk-In Door \$90

Gable End
32' to 40' Wide \$600
42' to 50' Wide \$750
52' to 60' Wide \$900

Insulation
Double Bubble \$1.50/sqft
Woven R-17* \$3.00/sqft
*exclusive CCI product

Side Openings
Up To 16'
With Garage Door \$325
Without Garage Door \$425

Walk-In Doors
36" X 80"
\$300



Windows
\$200 30" X 30" \$225 30" X 36"

End Openings
Without Garage Door \$150

Blueprints
Call For Pricing
1-800-670-4262

